



LUND
UNIVERSITY



Information and registration: dana.sladkeviciene@med.lu.se

Advanced course on ultrasound diagnosis of endometriosis 21-22 October 2021 (web-based)

Course directors

Prof Lil Valentin
Assoc prof Povilas Sladkevicius
Dr Ligita Jokubkiene

Invited faculty

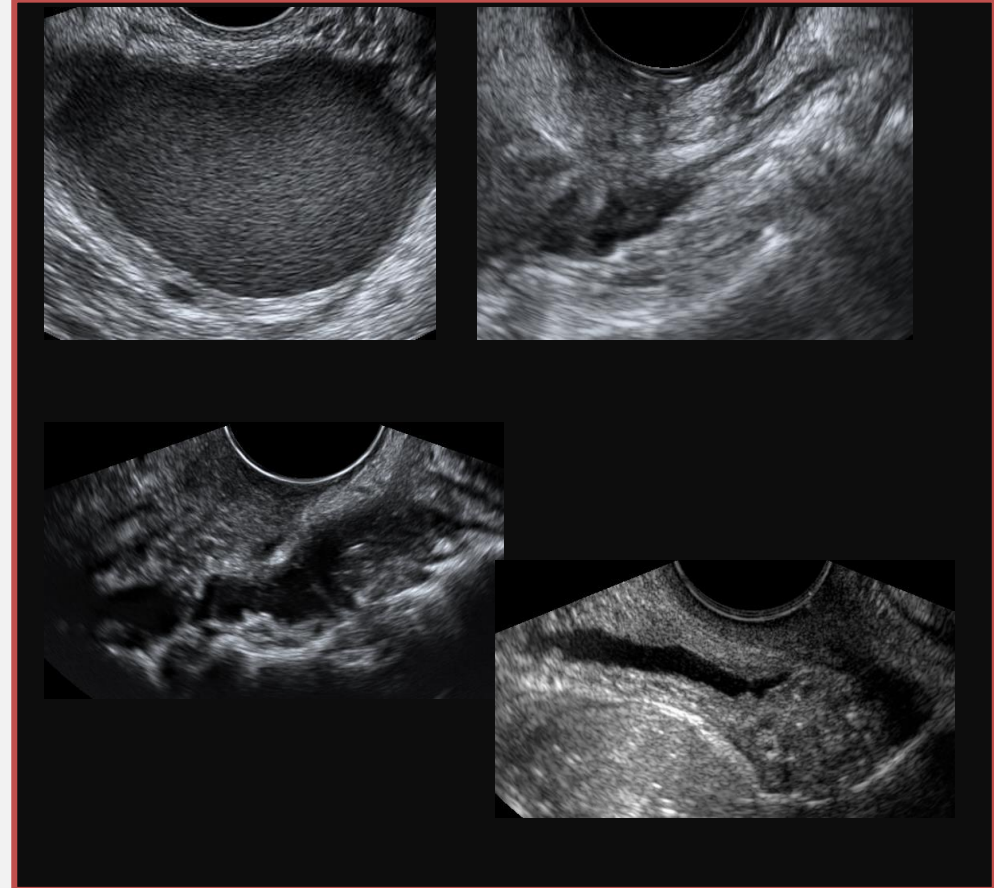
Antonia Testa
Luca Savelli
Tina Tellum
Kristine Aas-Eng
Mala Sibal
Ladbans Kaur
Jörg Keckstein
Gernot Hudelist
Axel Forman

Program

Scanning technique
Terminology
Classification

Adenomyosis
Rare sites
Malignization
Decidualization
Neuropelveology

Live scanning
Case presentations
.... and more



Day 1 21st October 2021

8.45 – 8.55 Welcome and introduction	Valentin
8.55 - 9.05 ISUOG information	Jokubkiene
9.05-9.45 Optimization of image and basic scanning technique	Valentin
9.55 -10.35 Scanning of endometriosis patients	Valentin
10.45-10.55 Scanning of sacro-uterine ligaments 1	Savelli
11.05 -11.25 IDEA consensus statement	Valentin
11.35 – 11.45 Measurement of rectosigmoid lesion-to-anal verge distance	Aas-Eng
11.55 – 12.20 Scanning the parametria, lateral compartment	Testa
Scanning of sacro-uterine ligaments 2	Leonardi
<i>12.30 -13.30 LUNCH</i>	
13.30 -14.00 Ultrasound versus MRI for diagnosis of adenomyosis	Tellum
14.10 -14.40 MUSA	Valentin
15-15.20 Clinical relevance of adenomyosis - the evidence	Tellum
15.30 – 16.05 Treatment of adenomyosis - the evidence	Tellum
16.15 -16.45 Live scanning, normal anatomy	Testa
16.45 -17.15 Live scanning, endometriosis	Jokubkiene
17.15 CLOSE	

Day 2, 22nd October 2021

9 – 9.15 Summary of yesterday	Valentin
9.15-9.45 Endometriosis in pregnancy, decidualization	Testa
9.55 - 10.35 Malignization in endometriosis	Valentin
10.55 Rare sites of endometriosis	Sibal
<ul style="list-style-type: none">• Abdominal wall• Umbilical• Inguinal	
Case presentations of rare sites of endometriosis	Sibal
12.15 -12.25 Ileocecal endometriosis	Ladbans Kaur
<i>12.30 - 13.30 LUNCH</i>	
13.30 -14.00 The #Enzian classification of endometriosis	Keckstein
14.10 – 14.40 Ultrasound when planning surgery	Hudelist
15 – 15.35 Neuropelveology	Forman
15.45-16.30 Case presentations	Jokubkiene
	Sladkevicius
16.40 -17.00 Course <i>TEST</i>	Valentin
17-17.15 Sum-up and close	Valentin